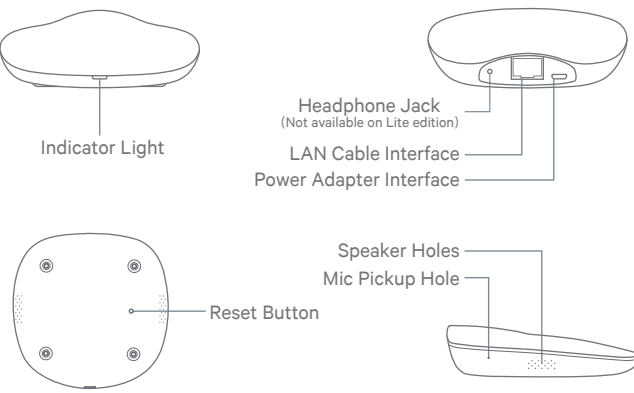


Home Center Introduction

Terncy Home Center is the hub of Xiaoyan's ecosystem. With other accessories, it supports remote connection, intrusion detection, lighting automation, power consumption management, environmental perception, etc. through Terncy app via ZigBee wireless protocol.



1

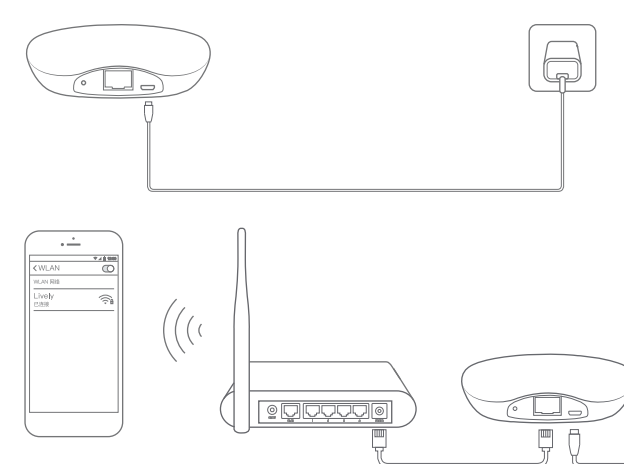
Download and Install App

Download Terncy app from application markets or scan the QR code below. Follow the direction in the app to connect your devices properly.



2

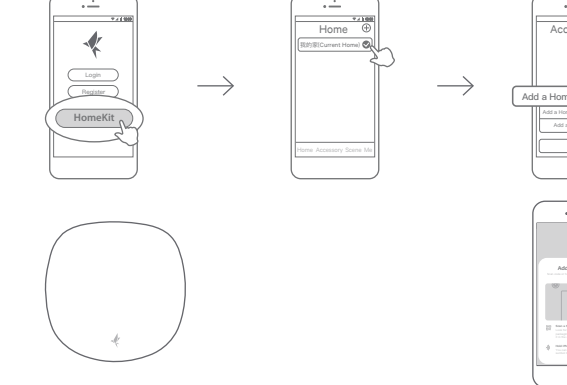
Connect Home Center to network



1. Connect the power adapter to Home Center;
2. Connect the LAN cable to Home Center, and ensure the phone is connected to the same router via WiFi.

3

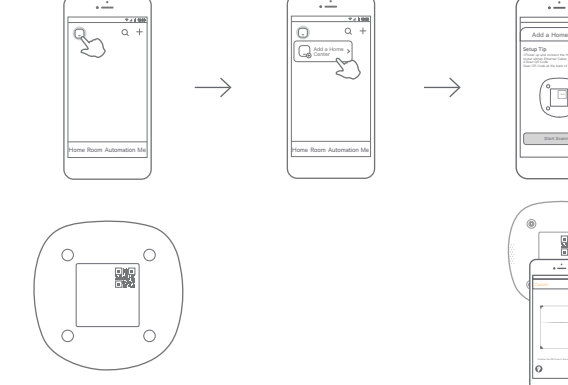
Add Home Center in HomeKit mode



1. Launch Terncy App;
2. Tap on the HomeKit icon on the login page to access;
3. Select the home where you want to add the device on the Home page, then switch to the Accessory page and click on the "+" button on the top right corner, choose "Add a HomeKit Accessory";
4. Follow the prompts and scan the QR code on the back of the home center, then proceed with the guided instructions;
5. The device will be automatically synced in the Apple Home app.

4

Add Home Center in Terncy App



1. Launch the Terncy App and log in with your account;
2. Tap the "☐" button at the top left corner;
3. Select "Add a Home Center";
4. Tap on the "Start Scanning" button;
5. Scan the QR code on the back of the home center.

* (If the home center has already been added by another user, you will need the user's permission.)

5

Indicator Light State



State	Indicator Light	Meaning
	Green on	Running properly
	Yellow flash	Connecting to network
	Yellow on	Resetting the device
	Yellow, Green, Blue flashing alternating	Upgrading firmware
	Blue on	Ethernet cable is not properly connected.
	Blue flash	Searching ZigBee device
	Blue, Green on	Enable LAN mode

6



Terncy WeChat Account

Contact Us

Online Service: <https://www.xiaoyan.io/service>
 Service Call: 400-920-2823
 E-mail: support@xiaoyan.io
 Shanghai Xiaoyan Technology Co., Ltd.
 Room 502, Building E, No.666, Shengxia Road,
 Shanghai, China

Reset to Factory Default

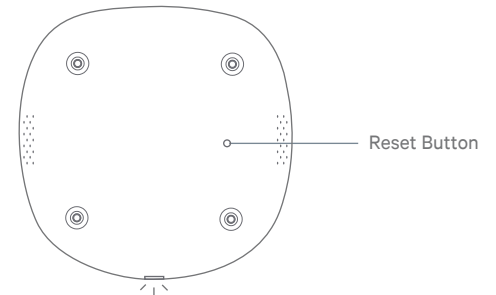
Note: Before proceeding, please check the firmware version of your gateway.

Version older than 3.2.1

1. Press and hold the reset button for 5 seconds until the yellow light starts flashing;
2. Wait about 30 seconds till resetting finish.

Version 3.2.1 or above

1. Press and click the reset button three times;
2. On the forth click, hold the reset button until the yellow light starts flashing;
3. Wait about 30 seconds till resetting finish.



Specifications

Product Name: Terncy Home Center
Product Model: TERNCY-GW02
Product Dimension: 100*100*24mm
Power: DC 5V/1A
Communication: ZigBee/LAN
Working Environment: -10~60°C
Humidity: ≤80%
Standards: GB/T 26256-2010

Do's & Don'ts Part1

1. When adding a new home center, make sure that your mobile phone and home center are connected to the same network;
2. A single home center can support up to 80 connected devices simultaneously;
3. Do not submerge or clean the product.

Note 1

Communication between iPhone, iPad, Apple Watch, HomePod, or Mac and the HomeKit-enabled Home Center is secured by HomeKit technology.

Controlling this HomeKit-enabled accessory automatically and away from home requires a HomePod, Apple TV, or iPad set up as a home hub. It is recommended that you update to the latest software and operating system.

Note 2

Xiaoyan Tech Co., Ltd reserves the right to update the content in the manual. Please refer to the latest version for the most accurate information.

Warranty Card

Xiaoyan's after-sales service includes:

Xiaoyan Tech shall remove any physical defects inherent in the device which are listed on the warranty card, free of charge, by replacing (at the sole discretion of Xiaoyan Tech) the defective device within the period of 15 days from the date of reception by the consumer, and by repairing the defective components of the device within the period of 24 months from the date of reception by the consumer.

* The warranties may be varied in different countries and regions.

The Warranty Applies to:

1. Surface damages resulting from mishandling during transport or defects inherent in material or structure of the products;
2. Failure of the buttons or indicator lights;
3. Failure of wireless communication.

The Warranty Does Not Apply:

1. When the warranty period expired;
2. To damages resulting from repairing and introducing alterations by unauthorized persons;
3. To damages caused by using accessories not recommended by the manufacturer;
4. To damages resulting from other irresistible causes.



Alauda
Terncy Home Center Manual

