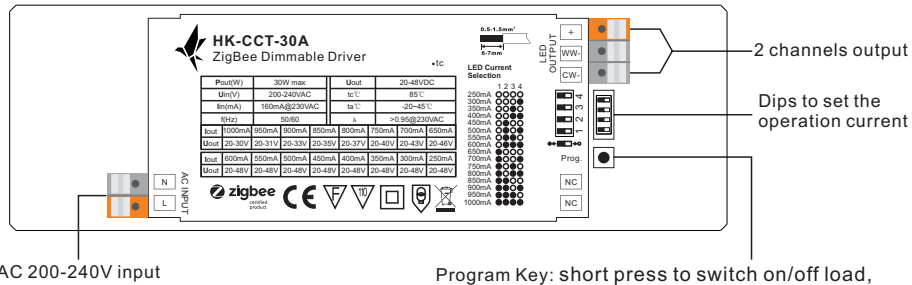


30W ZigBee CCT LED Driver(constant current)



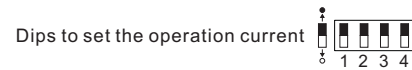
Important: Read All Instructions Prior to Installation
Function introduction



Product Data

Output	Selectable Current	250mA	300mA	350mA	400mA	450mA	500mA	550mA	600mA
	DC Voltage Range	8-48V	8-48V	8-48V	8-48V	8-48V	8-48V	8-48V	8-48V
	Selectable Current	650mA	700mA	750mA	800mA	850mA	900mA	950mA	1000mA
	DC Voltage Range	8-46V	8-42V	8-40V	8-37V	8-35V	8-33V	8-31V	8-30V
Input	Rated Power	30W max.							
	Voltage Range	200-240V AC							
	Frequency Range	50/60Hz							
	Power Factor (Typ.)	> 0.9 @ 230VAC							
	Total Harmonic Distortion	THD ≤ 15% (@ full load / 230VAC)							
	Efficiency (Typ.)	83% @ 230VAC full load							
	AC Current (Typ.)	0.17A @ 230VAC							
	Inrush Current (Typ.)	COLD START 2A max. at 230VAC							
	Leakage Current	< 0.5mA /230VAC							
	Protection	Short Circuit	Yes, auto recovery after fault removed						
Over Voltage		Yes, auto recovery after fault removed							
Over Temperature		Yes, auto recovery after fault removed							
Environment	Working Temp.	-20°C ~ +45°C							
	Max. Case Temp.	85°C (Ta=+45°C)							
	Working Humidity	10% ~ 95% RH non-condensing							

	Storage Temp. & Humidity	-40°C ~ +80°C, 10% ~ 95% RH
Safety&EMC	Safety Standards	ENEC EN61347-1, EN61347-2-13 approved
	Withstand Voltage	I/P-O/P: 3.75KVAC
	EMC Emission	EN55015, EN61000-3-2, EN61000-3-3
	EMC Immunity	EN61547, EN61000-4-2,3,4,5,6,8,11, surge immunity Line-Line 1KV
Others	MTBF	189400H, MIL-HDBK-217F @ 230VAC at full load and 25°C ambient temperature
	Dimension	170*53.4*28mm (L*W*H)



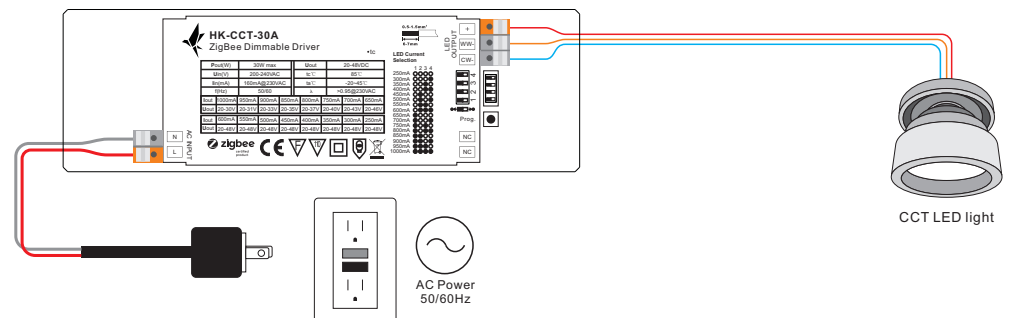
250mA	○ ○ ○ ○	650mA	● ○ ○ ○
300mA	○ ○ ○ ●	700mA	● ○ ● ○
350mA	○ ○ ● ○	750mA	● ○ ● ●
400mA	○ ○ ● ●	800mA	● ● ● ○
450mA	○ ● ○ ○	850mA	● ● ● ●
500mA	○ ● ○ ●	900mA	● ● ● ●
550mA	○ ● ● ○	950mA	● ● ● ●
600mA	○ ● ● ●	1000mA	● ● ● ●

- Dimmable LED driver for tunable white, ZigBee device based on ZigBee 3.0 protocol
- Max. output power 30W total, 2 channels 250-1000mA constant current output
- Dips to select multi operation current
- Class II power supply, full isolated plastic case
- Built-in active PFC function, high power factor and efficiency
- Deep and smooth dimming to 1%
- Waterproof grade: IP20, suitable for indoor LED lighting applications
- 5 years warranty

Safety & Warnings

- DO NOT install with power applied to device.
- DO NOT expose the device to moisture.

Wiring Diagram



Operation

1. Do wiring according to connection diagram correctly.

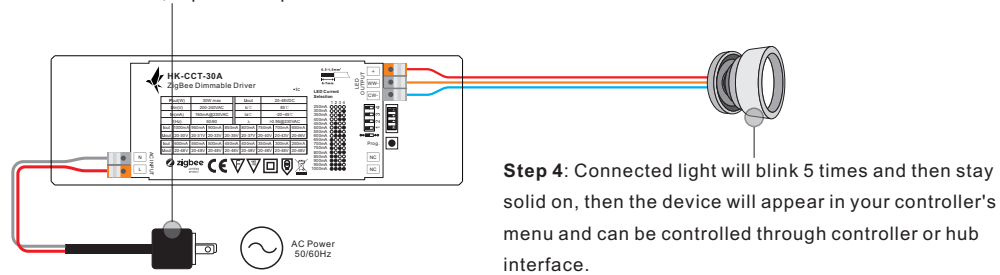
2. This ZigBee device is a wireless receiver that communicates with a variety of ZigBee compatible systems. This receiver receives and is controlled by wireless radio signals from the compatible ZigBee system.

3. Zigbee Network Pairing through Coordinator or Hub (Added to a Zigbee Network)

Step 1: Remove the device from previous zigbee network if it has already been added to, otherwise pairing will fail. Please refer to the part "**Factory Reset Manually**".

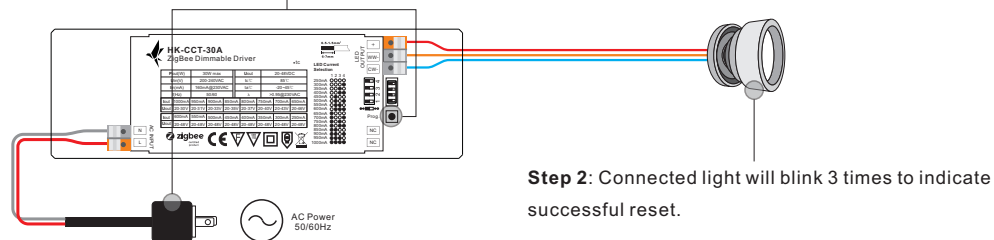
Step 2: From your ZigBee Controller or hub interface, choose to add lighting device and enter Pairing mode as instructed by the controller.

Step 3: Re-power on the device to set it into network pairing mode (connected light flashes twice slowly), 15 seconds timeout, repeat the operation.



4. Factory Reset Manually

Step 1: Short press "Prog." key for 5 times continuously or re-power on the device for 5 times continuously if the "Prog." key is not accessible.



Note: 1) If the device is already at factory default setting, there is no indication when factory reset again .
2) All configuration parameters will be reset after the device is reset or removed from the network.