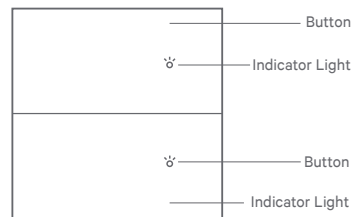


## Wall Switch Introduction

The Phoenix Smart Wall Switch utilizes the ZigBee wireless communication protocol. It can easily replace traditional switches without altering the wiring, enabling smart lighting control, intelligent scenes, and binding linkage functions.

\* The diagram is a 2 gang switch. The actual number of buttons varies in different switches.



1

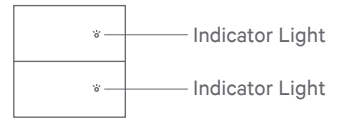
## Indicator Light Instruction (ZigBee Mode)



Indicator Status	Fast Flashing (10 flashes per second)	Connecting to Home Center nearby
	Slow flashing (1 flash every 2 seconds)	Successfully connected to Home Center
	Medium flashing (4 flashes per second)	Failed to connect to Home Center

2

## On-off Status Indicator State



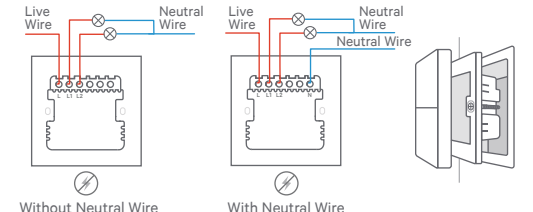
Indicator Status	White On	The device connected directly to it is powered on
	Yellow On or Off	The device connected directly to it is powered off

For different types of wall switches with multiple circuits, there may be differences in the specific functions of the indicator lights. For example, a 2 gang wall switch may have two indicator lights at the top left and top right to indicate the switch status, while the other buttons' indicator lights may flash during interaction to provide operational feedback.

To configure the indicator light status when power is off, you can switch between off or yellow by quickly pressing any load button on the switch 5 times.

3

## Physical Installation



1. Before installation, make sure the power is turned off;
  2. Follow the instructions on the back casing to complete the wiring. Tighten the wiring screws: connect the "L" terminal to the live wire, the "N" terminal to the neutral wire, and the "L1/L2" terminals to the light wires. (Using a 2 gang switch as an example)
  3. Use screws to secure the wall switch in the wall junction box and then install the front panel of the wall switch back onto it.
- \* Please refer to the specifications table on page 10 for the load power.  
\* Please note that different models of wall switches may have variations in the terminal positions. Please refer to the actual product for accurate terminal positions.

4

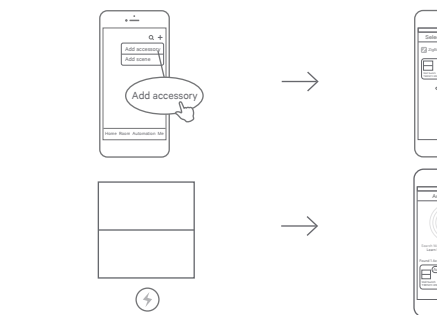
## Download and Install App

Download Terncy app from application markets or scan the QR code below. Follow the direction in the app to connect your accessory to Home Center.



5

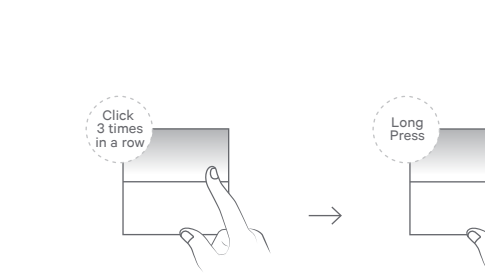
## Add Device in Terncy App



1. Launch Terncy app and log in;
2. Click on the "Add Device" page;
3. Turn on the power to the switch, and the indicator light will start flashing;
4. The app will automatically detect the accessory typically within 10 seconds.

6

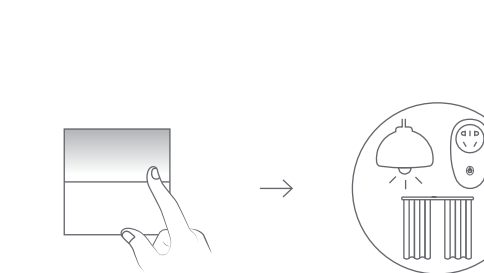
## Reset to Factory Default



1. The switch is powered on;
2. Click any key consecutively 3 times, then hold down the key until the indicator light starts flashing, and then release it;
3. The network configuration information of the switch will be cleared and can be added again.

7

## Automation



One button is able to control multiple lights, socket and curtain.

8



Terncy WeChat Account

### Contact Us

Online Service: <https://www.xiaoyan.io/service>

Service Call: 400-920-2823

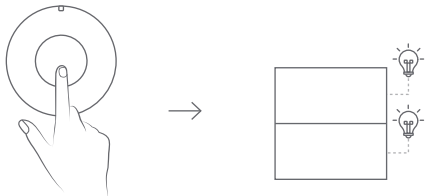
E-mail: [support@xiaoyan.io](mailto:support@xiaoyan.io)

Shanghai Xiaoyan Technology Co., Ltd.

Room 502, Building E, No.666, Shengxia Road,

Shanghai, China

### Automation



Bind the sensor switch (or other wall switch) to achieve dual control.

### Specifications

Product Type	Without Neutral Wire	With Neutral Wire	2/3/4 gang switch with Neutral Wire
Total power of resistive load ( AC 220V )	5W≤, <500W	≤1500W	≤2800W
Total power of capacitive load ( AC 220V )	5W≤, <200W	≤500W	≤500W

#### Load specification reference

Load Device Type	Resistive classification
LED lighting	Capacitive
Energy-saving lamp/ fluorescent lamp	Capacitive
Incandescent lamp/ tungsten filament lamp	Resistive
Electric water heater	Resistive
Bathroom heater	Resistive

For reference only, please refer to the markings of the original equipment manufacturer.

### Specifications

Product Name: Phoenix Smart Wall Switch Manual

Product Model: TERNCY-WS10-S1/2/3/4/D1/2/3/4

Product Dimension: 86×88×34mm

In Wall Dimension: 62×65×25.5mm

Working Temperature: -10- 65°C

Humidity: ≤80%

Working Voltage: 110-220V AC 50/60HZ

Standards: GB/T-26572-2011

### Dos & Don'ts

1. Do not submerge or clean the product ;
2. Please keep the product away from fire sources, high temperatures, and other extreme environments.

#### Note

Xiaoyan Tech Co., Ltd reserves the right to update the content in the manual. Please refer to the latest version for the most accurate information.

### Warranty Card

Xiaoyan's after-sales service includes:

Xiaoyan Tech shall remove any physical defects inherent in the device which are listed on the warranty card, free of charge, by replacing (at the sole discretion of Xiaoyan Tech) the defective device within the period of 15 days from the date of reception by the consumer, and by repairing the defective components of the device within the period of 24 months from the date of reception by the consumer.

\* The warranties may be varied in different countries and regions.

#### The Warranty Applies to:

1. Surface damages resulting from mishandling during transport or defects inherent in material or structure of the products;
2. Failure of the buttons or indicator lights;
3. Failure of wireless communication.

#### The Warranty Does Not Apply:

1. When the warranty period expired;
2. To damages resulting from repairing and introducing alterations by unauthorized persons;
3. To damages caused by using accessories not recommended by the manufacturer;
4. To damages resulting from other irresistible causes.



## Phoenix Smart Wall Switch Manual

